



# MONTHLY MEMBERSHIP PROGRESS REPORT

District 25 B

Results as of: 04/30/2019

GMT: STEVE ANTON

LOCATION INDIANA

GMT CA

Clubs			
RESULTS FOR 2018-2019			
QUARTER	NEW CLUB GOAL	NEW CLUBS	DROPPED CLUBS
JULY/AUG/SEPT	0	0	0
OCT/NOV/DEC	1	0	0
JAN/FEB/MAR	0	0	1
APR/MAY/JUNE	0	0	0

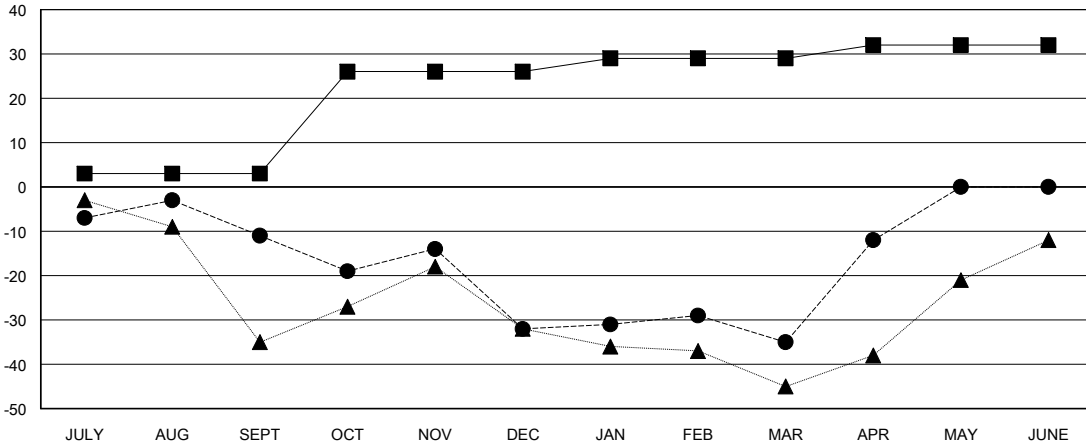
Members			
RESULTS FOR 2018-2019			
QUARTER	MEMBER GROWTH NET GOAL	MEMBER GROWTH ACTUAL	DROPPED MEMBERS ACTUAL (including transfers)
JULY/AUG/SEPT	3	17	27
OCT/NOV/DEC	23	23	42
JAN/FEB/MAR	3	21	20
APR/MAY/JUNE	3	32	8

GOALS AND ACTUAL NEW CLUBS CUMULATIVE



- - CURRENT YEAR GOALS FOR NEW CLUBS
- - CURRENT YEAR ACTUAL NEW CLUBS
- ▲ - LAST YEAR ACTUAL NEW CLUBS

GOALS AND ACTUAL MEMBERS CUMULATIVE



- - MEMBER GROWTH NET GOAL
- - MEMBER GROWTH ACTUAL
- ▲ - LAST YEAR MEMBERSHIP ACTUAL

DROPPED CLUBS: 1
------------------

34 CLUBS OF 51 ADDED 1 OR MORE NEW MEMBERS

GENDER DISTRIBUTION	
MALE	911 (72.94%)
FEMALE	338 (27.06%)
Women Percentage Fiscal Year Goal: 30%	

DROPPED MEMBERS	
DECEASED	12
CLUB CANCELLED	0
OTHER	85
<b>TOTAL</b>	<b>97</b>

[CLICK HERE FOR CUMULATIVE MEMBERSHIP DATA](#)

TOTAL FAMILY UNIT MEMBERS	235
FAMILY MEMBERS PAYING HALF DUES	119